

Chalk

THE CHARM
OF COLORS,
THE TOUCH
OF CONCRETE.



La matericit  della superficie incontra una palette cromatica dalle tinte tenui per raccontare un'esperienza fatta di stimoli visivi, forme nuove, pattern geometrici e naturalmente colori.

The structured surface blends with a palette of neutral colours to offer a unique experience made of visual impressions, new shapes, geometric patterns and, of course, colours.



Chalk

Una selezione di nuance neutre: white, silver, grey, dark, superfici ricche di sensazioni tattili dove le affascinanti irregolarità del cemento si concentrano sui bordi. A completare i formati tradizionali, 20x20 e 7,5x30 una nuova forma, il rombo, capace di generare molteplici campiture dalle grafiche diverse. Lo studio sulla decorazione mostra una nuova ricerca cromatica, che si concentra sui colori: cipria, verde salvia, blu, proposti come decori monocromatici, ma anche presenti in una nuova selezione di pattern geometrici, miscelabili fra loro per creare campiture dai toni delicati.

A selection of neutral tones: white, silver, grey, dark. Surfaces with an abundance of tactile sensations, on which the fascinating irregular texture of concrete becomes more evident on the sides. Along with the conventional sizes, 20x20 and 7.5x30, a new shape, the diamond, has been added to create multiple chromatic combinations with various patterns. The decoration highlights a detailed study on colours, focusing on different grades of shade: powder pink, green, blue and yellow, available both as monochromatic decors and in a new selection of geometric patterns that can be mixed and matched to create areas of ornamental surfaces in delicate tones.



Chalk

FORMATI: rombo 18,7x32,4 cm, 20x20 cm, 7,5x30 cm
 SIZES: diamond 7^{3/8}x12^{3/4}, 8"x8", 3"x12"

SPESSORE: rombo 18,7x32,4 cm - 20x20 cm 9 mm, 7,5x30 cm - 8,5 mm
 THICKNESS: diamond 7^{3/8}x12^{3/4}, 8"x8" - 9mm, 7,5x30 cm - 8,5 mm

SUPERFICIE: naturale
 SURFACE: matt

ASPETTO: cotto cemento
 APPEARANCE: terracotta / concrete

COLORI: White, Silver, Grey*, Dark*
 COLOURS: White, Silver, Grey*, Dark*

DECORI: forme geometriche multicolor
 DECORS: multi-coloured geometric shapes



*Alcuni articoli della collezione possono contribuire all'ottenimento dei crediti LEED.
 *Some items of the collection may contribute to obtaining LEED credits.



Per avere l'elenco completo degli articoli visitare <https://www.marcacorona.it/etica/certificazioni.html>
 For a complete list of the items, visit <https://www.marcacorona.it/eng/ethics/certifications.html>



Pavimento/floor: Clk. White Rmb. - Clk. Grey Rmb. - Clk. Dark Rmb. 18,7x32,4cm (7³/₈x12³/₄)



Quando un piccolo assaggio scatena
un largo sorriso...

When a small taste triggers
a broad smile...



GREY

Rivestimento/wall: Clk. Grey 7,5x30 (3"x12")
Bancone/counter: Ton. White 7,5x30 (3"x12")





Rivestimento/wall: Clk. Grey 7,5x30 (3"x12")
Bancone/counter: Ton. White 7,5x30 (3"x12")
Pavimento/floor: Clk. Grey Rmb, Clk. Dark Rmb 18,7x32,4cm (7³/₈x12³/₄)

Pavimento/floor: C1k. Grey Rmb, C1k. Dark Rmb 18,7x32,4cm (7³/₈x12³/₄)



03 Chalk

gres fine porcellanato colorato in massa // fine full-body coloured porcelain stoneware

Vitamine e fantasia.
Vitamins and fantasy.

DARK

Rivestimento/wall: Clk. Dark 7,5x30 cm (3"x12")



Rivestimento/wall: Clk. Dark 7,5x30 cm (3"x12")

Bancone/counter: Clk. White Rmb, Clk. Silver Rmb, Clk. Grey Rmb 18,7x32,4cm (7³/₈x12³/₄)

Pavimento/floor: Clk. White Rmb 18,7x32,4cm (7¹/₄x12³/₄)

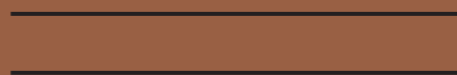
Clk. White Rmb 18,7x32,4cm (7³/₈x12³/₄)



Bancone/counter: Clk. White Rmb, Clk. Silver Rmb, Clk. Grey Rmb 18,7x32,4cm (7³/₈x12³/₄)
Pavimento/floor: Clk. White Rmb 18,7x32,4cm (7³/₈x12³/₄)



Un nuovo look per stupire.
A new look that astonishes.



SILVER

Rivestimento/wall: Clk. Silver 7,5x30 (3"x12")



Rivestimento/wall: Clk. Silver 7,5x30 (3"x12")

Volume/volume: Type Dark 120x240 (48"x96")

Pavimento/floor: Clk. Silver Rmb, Clk. Grey Rmb, Clk. Dark Rmb 18,7x32,4cm (7³/₈"x12³/₄")

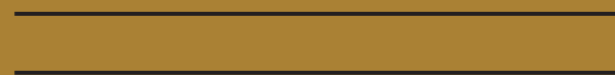
n°35
men salon
GENTLEMEN'S HAIRCUTS

Rivestimento/wall: Clk. Grey 7,5x30 (3"x12")

Pavimento/floor: Clk. Silver Rmb, Clk. Grey Rmb, Clk. Dark Rmb 18,7x32,4cm (7³/₈x12³/₄)



Accarezzati da pensieri positivi,
coccolati da uno spuntino condiviso.
Caressed by positive thoughts,
pampered by a snack in good company.



SILVER

Rivestimento/wall: Clk. Silver 7,5x30 (3"x12")





play

BREAKFAST
MENU
Full breakfast 4,90
Half breakfast 3,90
Smoothie 2,50
Cappuccino 1,80
Espresso 1,20
Sandwich 2,50
Bread & Butter 1,50
Price list

Rivestimento/wall: Clk. Silver 7,5x30 (3"x12")
Bancone/counter: Mai.Bianco 10x10 (4"x4")
Pavimento/floor: Clk. White Rmb, Clk. Grey Rmb, Clk. Dark Rmb 18,7x32,4cm (7³/₈x12³/₄)

Rivestimento/wall: Clk. Silver 7,5x30 (3"x12")
Bancone/counter: Mai.Bianco 10x10 (4"x4")
Pavimento/floor: Clk. White Rmb, Clk. Grey Rmb, Clk. Dark Rmb 18,7x32,4cm (7³/₈x12³/₄)



Aglio, olio e peperoncino.
Garlic, oil and chili pepper.



DECORI MIX



Rivestimento/wall: Clk. Decors 20x20 (8"x8"), Clk. Silver 20x20 (8"x8")
Pavimento/floor: Clk. Decors 20x20 (8"x8"), Clk. Silver 20x20 (8"x8")

Clk. Silver 20x20 (8"x8")



Rivestimento/wall: Clk. Decors 20x20 (8"x8"), Clk. Silver 20x20 (8"x8")
Pavimento/floor: Clk. Decors 20x20 (8"x8"), Clk. Silver 20x20 (8"x8")



~ Chalk

TECNOLOGIA

gres fine porcellanato colorato in massa

TECNOLOGY

fine full-body coloured porcelain stoneware

FORMATI

rombo 18,7x32,4 cm, 20x20 cm, 7,5x30 cm

SIZES

diamond 7³/₈x12³/₄, 8"x8", 3"x12"

SPESSORE

9 mm - 8,5 mm

THICKNESS

9 mm - 8,5 mm

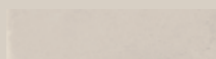
pavimento e rivestimento / floor and wall
spessore / thickness: 9 mm - 8,5 mm



E754
Clk. White rmb
18,7x32,4 cm - 7³/₈x12³/₄



E633
Clk. White
20x20 cm - 8"x8"



E629
Clk. White
7,5x30 cm - 3"x12"



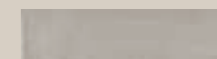
V2 Variazione minima / Slight variation



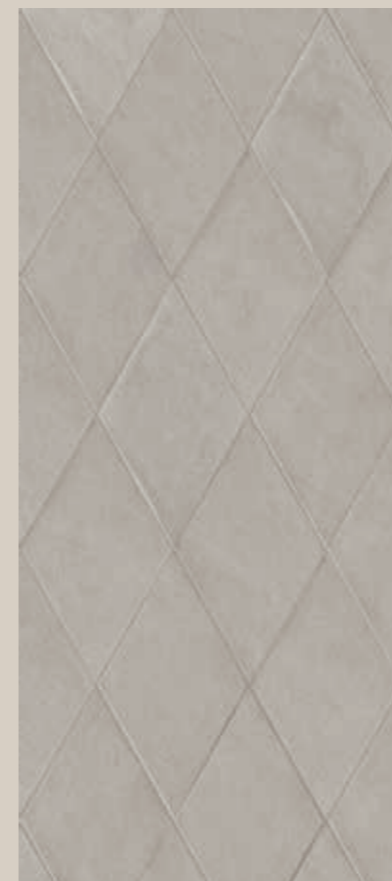
E755
Clk. Silver rmb
18,7x32,4 cm - 7³/₈x12³/₄



E634
Clk. Silver
20x20 cm - 8"x8"



E630
Clk. Silver
7,5x30 cm - 3"x12"



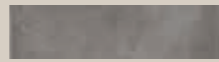
pavimento e rivestimento / floor and wall
spessore / thickness: 9 mm - 8,5 mm



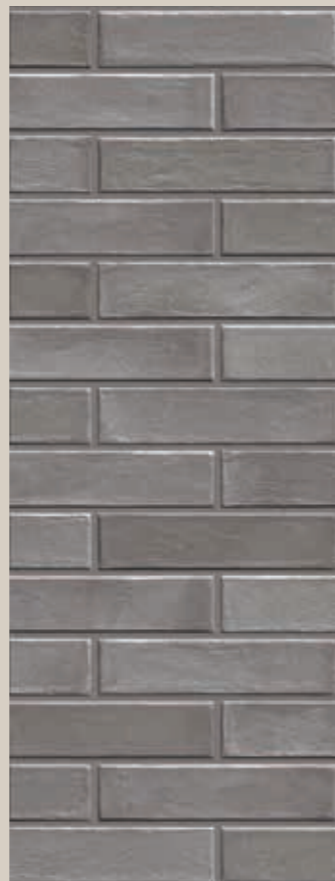
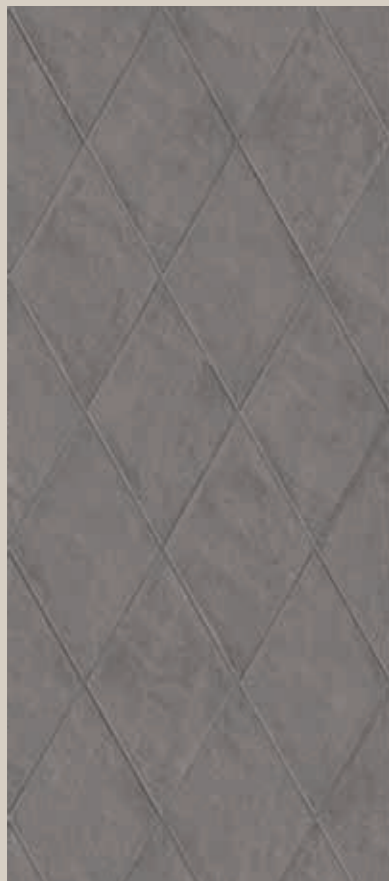
E756
Clk. Grey rmb
18,7x32,4 cm - 7³/₈x12³/₄



E635
Clk. Grey
20x20 cm - 8"x8"



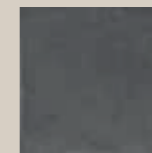
E631
Clk. Grey
7,5x30 cm - 3"x12"



V2 Variazione minima / Slight variation



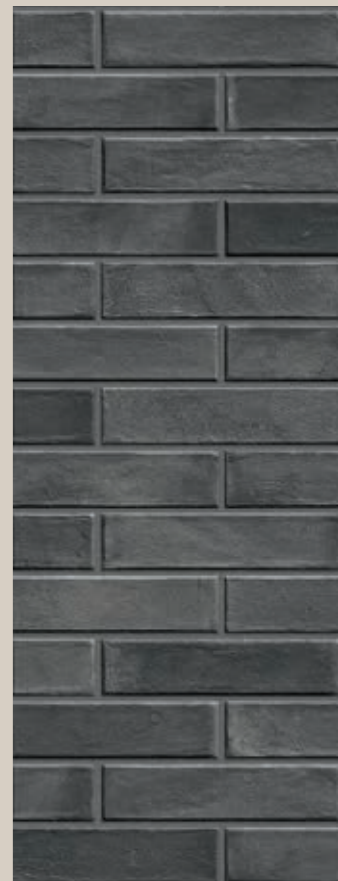
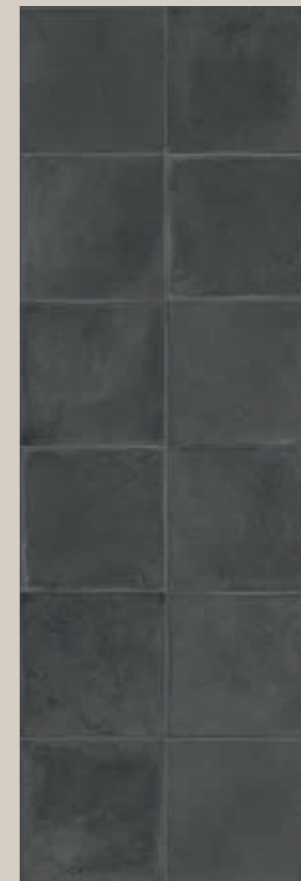
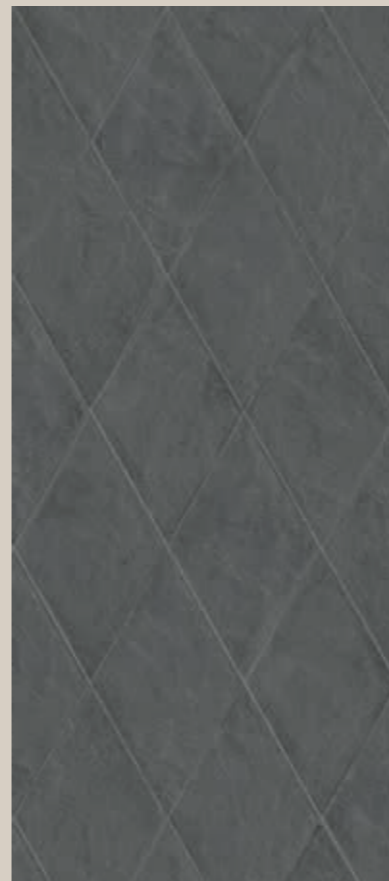
E757
Clk. Dark rmb
18,7x32,4 cm - 7³/₈x12³/₄



E636
Clk. Dark
20x20 cm - 8"x8"



E632
Clk. Dark
7,5x30 cm - 3"x12"





V2 Variazione minima / Slight variation

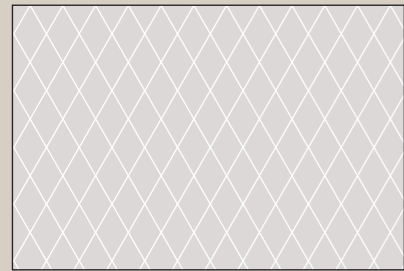


*E637
Clk. Decors
20x20 cm - 8"x8"

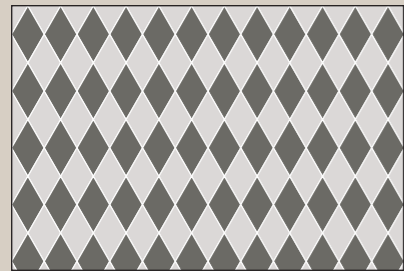


*Inscatolamento controllato random dei soggetti.
*Controlled random packing of subjects.

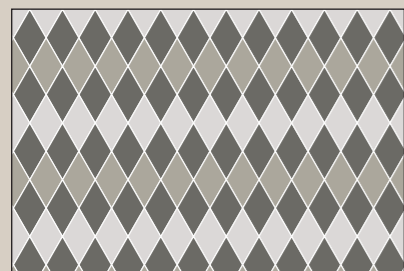
◇ MODULO A



◇ 100%

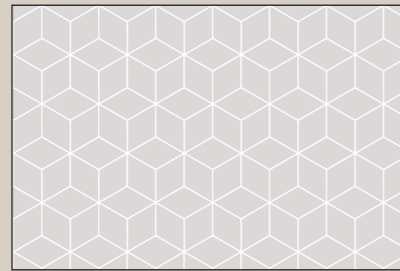


◇ 50% ◇ 50%

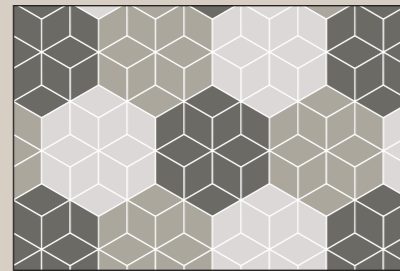


◇ 25% ◇ 25% ◇ 50%

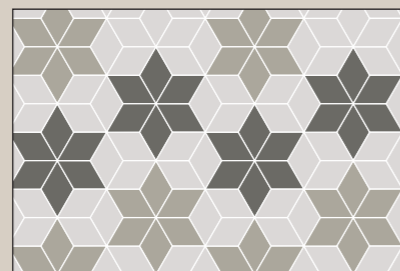
◇ MODULO B



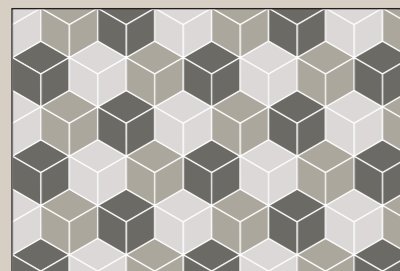
◇ 100%



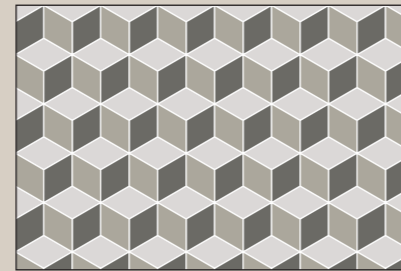
◇ 33,3% ◇ 33,3% ◇ 33,3%



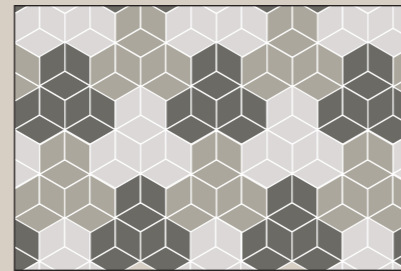
◇ 45% ◇ 32% ◇ 23%



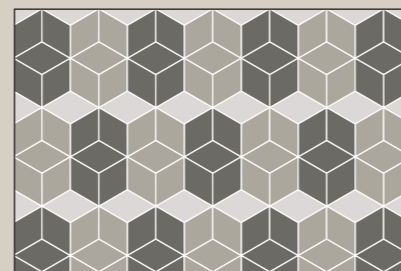
◇ 33,3% ◇ 33,3% ◇ 33,3%



◇ 33,3% ◇ 33,3% ◇ 33,3%

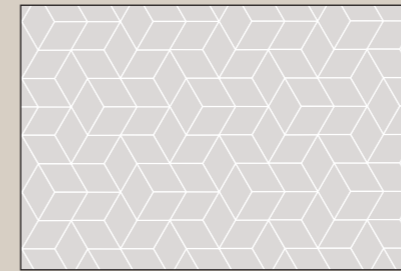


◇ 33,3% ◇ 33,3% ◇ 33,3%

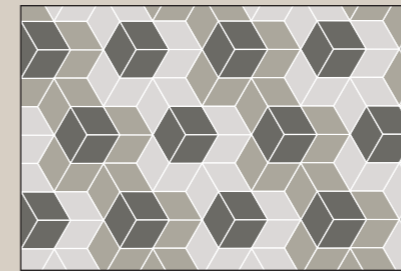


◇ 10% ◇ 45% ◇ 45%

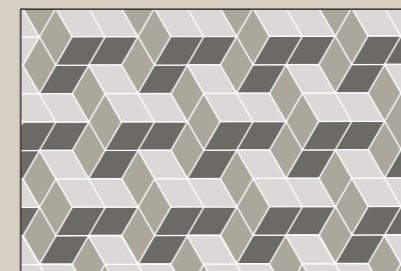
◇ MODULO C



◇ 100%



◇ 33,3% ◇ 33,3% ◇ 33,3%

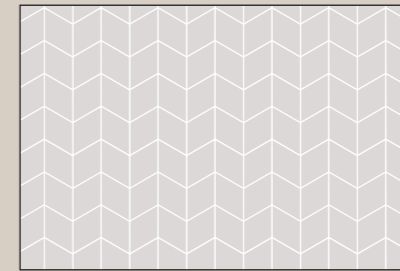


◇ 33,3% ◇ 33,3% ◇ 33,3%

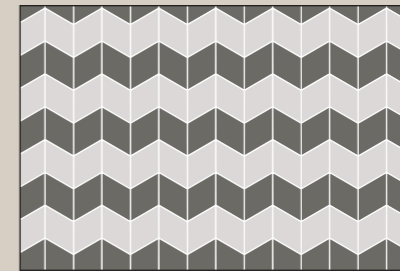


◇ 33,3% ◇ 33,3% ◇ 33,3%

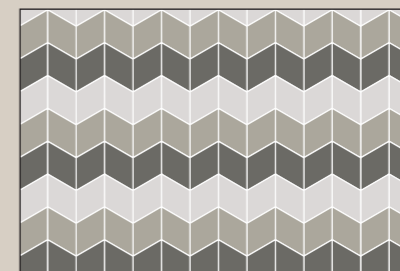
◇ MODULO D



◇ 100%



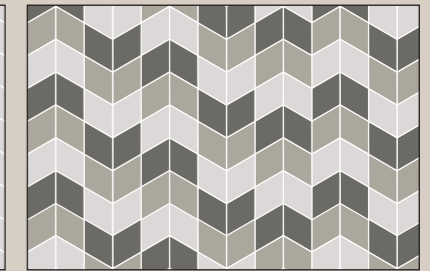
◇ 50% ◇ 50%



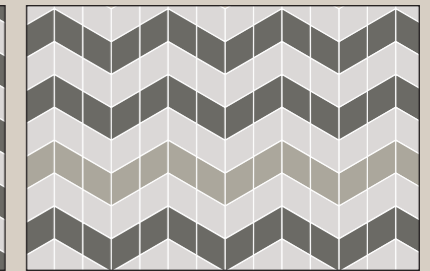
◇ 33,3% ◇ 33,3% ◇ 33,3%



◇ 100%



◇ 33,3% ◇ 33,3% ◇ 33,3%



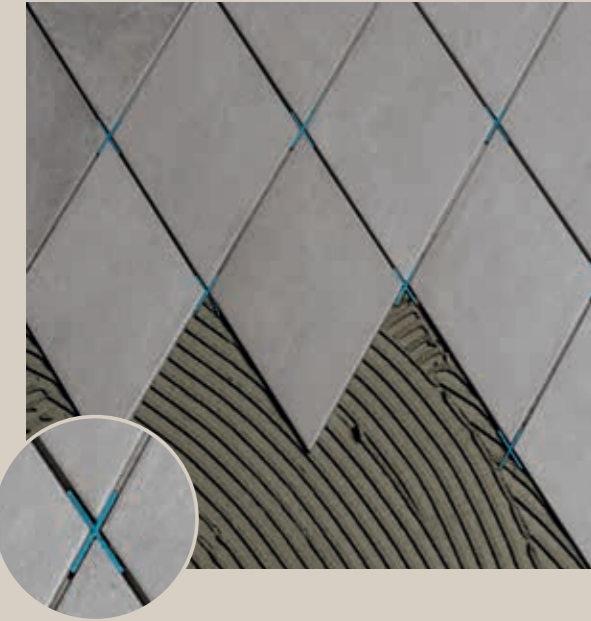
◇ 50% ◇ 17% ◇ 33%

Indicazioni di posa rombo / Diamond shape installation



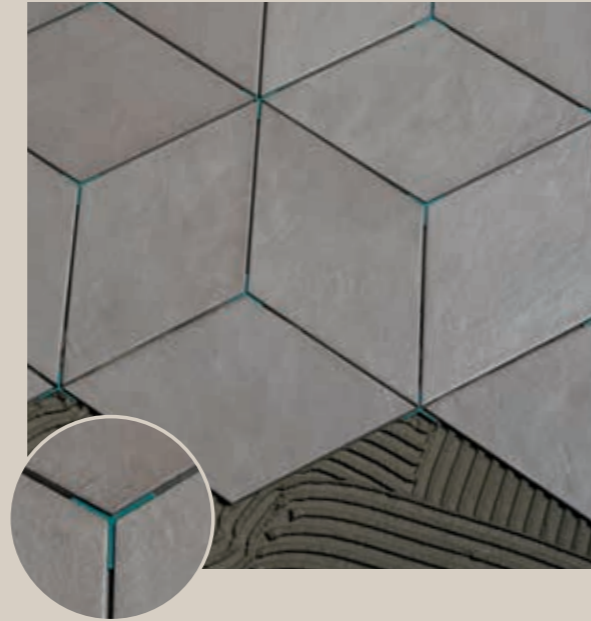
MODULO A

DIS6 DISTAN.RMB.1
200 PZ (*)



MODULO B

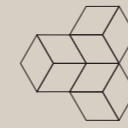
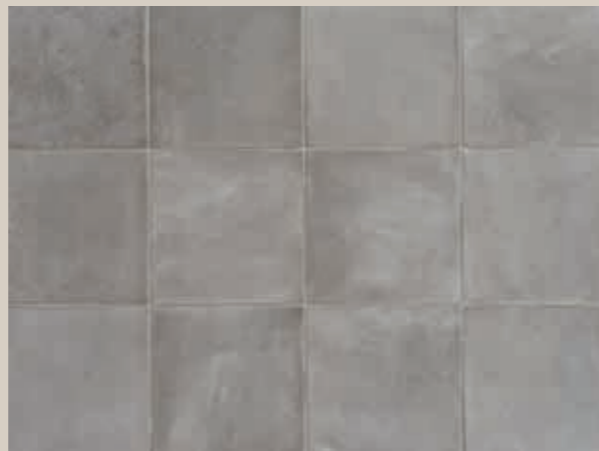
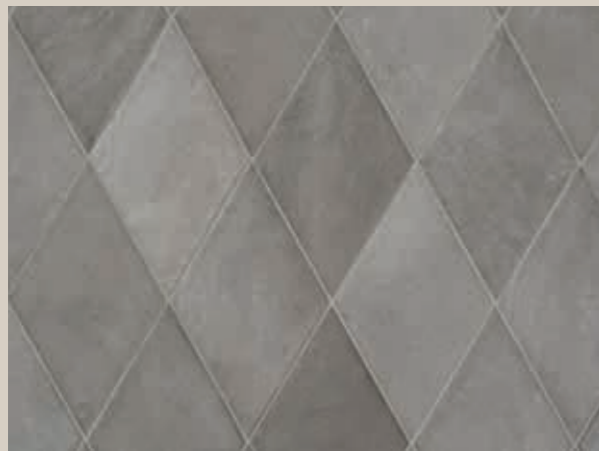
DIS7 DISTAN.RMB.2
200 PZ (*)



L'utilizzo dei distanziatori aiuta a mantenere le fughe costanti e regolari, ma non compensa in alcun modo eventuali differenze di calibro tra le piastrelle
Spacers will help in keeping the joints between the tiles constant and even, but they do not compensate for any difference in caliber between tiles

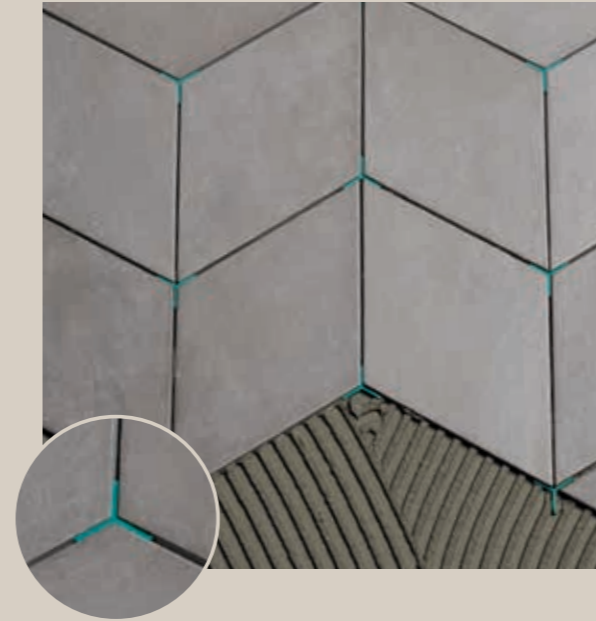
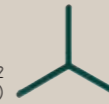
Indicazioni di posa rombo - 20x20 - 7,5x30 / diamond - 8"x8" - 3"x12" installation

Fuga minima consigliata 2 mm / Fuga minima consigliata 2 mm



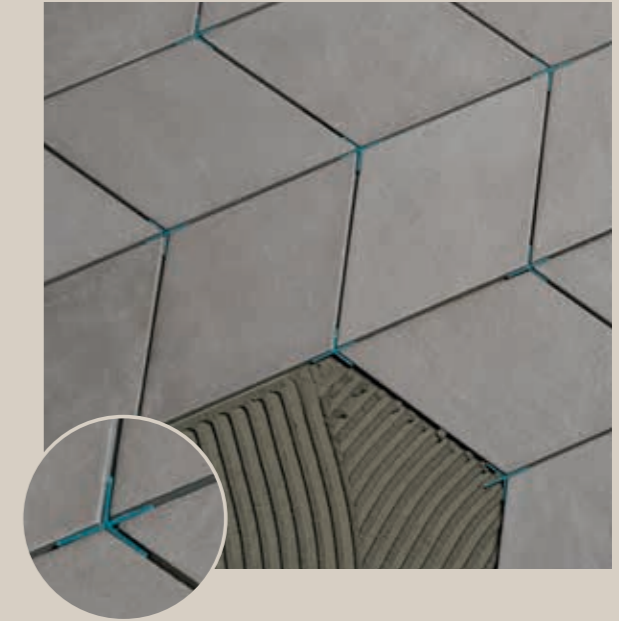
MODULO C

DIS7 DISTAN.RMB.2
200 PZ (*)



MODULO D

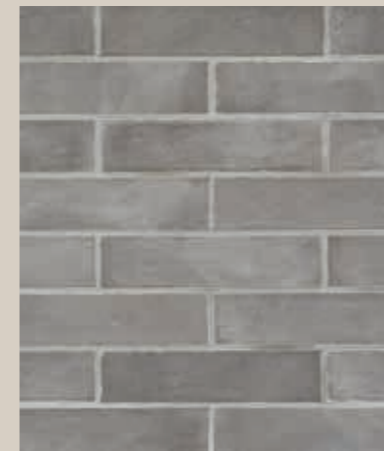
DIS8 DISTAN.RMB.3
200 PZ (*)



(*) Ogni busta corrisponde a 200 distanziali
(*) Each bag corresponds to 200 spacers

Scegli il colore della fuga / Choose the colour of grout line

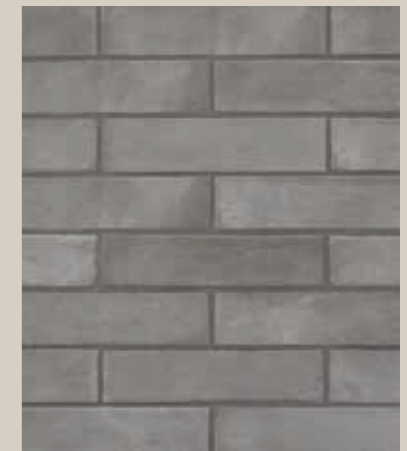
1 Fuga minima 2 mm in tono
Shade-on-shade grout line



2 Fuga minima 2 mm, a contrasto chiaro
Grout line in bright contrast



3 Fuga minima 2 mm, a contrasto scuro
Grout line in dark contrast



Pulizia post posa
La fuga di dimensioni consigliate per il 7,5x30 cm richiede un tempo di asciugatura maggiore rispetto alle più comuni fughe della dimensione di qualche mm. Si consiglia di prestare la massima attenzione durante la fase di pulizia post posa, al fine di evitare la rimozione dello stucco.

Cleaning after laying
The grout-line size recommended for the size 7,5x30 cm requires a longer drying time compared to the most common grout-line of a few mm. We suggest to pay attention during cleaning after laying, in order to prevent removal of the grout.

Chalk Voci di capitolato / Technical specifications

GRES FINE PORCELLANATO COLORATO IN MASSA

Caratteristiche merceologiche e di processo

Piastrelle o Lastre in Gres Fine Porcellanato Colorato in Massa, omogeneamente greificato a tutto spessore e composto da impasto finissimo di argille pregiate con aggiunta di feldspati e caolini, realizzate per pressatura e rese meccanicamente resistenti tramite un processo di sinterizzazione ad elevatissime temperature. Piastrelle o Lastre ingelive, inassorbenti e resistenti agli attacchi chimici. Temperatura di Cottura 1230° C.

Conformità alle norme

Il materiale è conforme ai requisiti previsti dalle norme internazionali UNI EN 14411 – ISO 13006 Annex G. Il mantenimento di tali parametri deve essere garantito dal Sistema di Gestione della Qualità attivato dall’azienda e certificato secondo la norma UNI EN ISO 9001 : 2008.

Materiale completamente vetrificato appartenente al Gruppo Bla – E ≤ 0,5 %.

FINE FULL-BODY COLOURED PORCELAIN STONEWARE

Product and manufacturing features

Ceramic tiles or slabs in Fine Full-body Coloured Porcelain Stoneware, uniformly vitrified along its entire thickness and made of an extremely fine mix of precious clays with added feldspars and kaolin, obtained by pressing and made mechanically resistant thanks to a sintherization process at high temperatures. Ceramic tiles or slabs frost-proof, inabsorbent, and resistant to chemical attack. Firing temperature1230° C.

Compliance with standards

The material complies with the requirements provided for by International UNI EN 14411 – ISO 13006 Standards, Annex G.

These parameters must be maintained and guaranteed by the Quality Management Systems established by the company and certified by the UNI EN ISO 9001 : 2008 standard. Completely vitrified material belonging to Group Bla – E ≤ 0,5 %.

GRÈS CÉRAME FIN COLORÉ PLEINE MASSE

Caractéristiques du matériel et du procédé

Carreaux ou dalles en grès cérame fin coloré pleine masse, fritté de façon homogène sur toute l'épaisseur et composé d'une très fine pâte d'argiles précieuses avec adjonction de feldspaths et de kaolins ; fabriqués par pressage et avec une résistance mécanique due à un procédé de frittage à très haute température. Carreaux ou dalles résistants au gel, imperméables et résistants aux agressions chimiques. Température de Cuisson 1230°C.

Conformité aux normes

Le matériau est conforme aux critères prévus par les normes internationales UNI EN 14411 – ISO 13006 Annexe G. Le maintien de ces paramètres doit être assuré par le Système de Gestion de la Qualité activé par la société et certifié selon la norme UNI EN ISO 9001 : 2008.

Matériel complètement vitrifié appartenant au Groupe Bla – E ≤ 0,5 %.

DURCHGEFÄRBTES FEINSTEINZEUG

Produkteigenschaften und Produktionsproß

Fliesen oder Platten in voll gefärbtem Feinsteinzeug, vollständig homogen glasiert und aus feinem hochwertigen Ton unter Zugabe von Feldspat und Kaolin (Porzellanerde) gefertigt, gepresst und durch einen Sinterproß bei höchsten Temperaturen gegen mechanische Belastungen resistent gemacht. Fliesen oder Platten frostsicher, wasserabweisend und chemisch beständig. Brenntemperatur 1230° C.

Normentsprechung

Das Material ist mit den geforderten Eigenschaften der internationalen Norm UNI EN 14411 – ISO 13006 Anlage G konform. Die Aufrechterhaltung dieser Parameter muß vom Qualitätsverwaltungssystem des Unternehmens garantiert und gemäß der Norm UNI EN ISO 9001 : 2008 zertifiziert sein. Material vollständig verglast, der Gruppe Bla – E ≤ 0,5 % zugehörig.

GRES PORCELÁNICO FINO DE COLOR A TODA MASA

Características mercadotécnicas y de proceso

Baldosas o lanchas en gres porcelánico fino de color a toda masa, homogéneamente gresificadas en todo el espesor y compuestas por una mezcla finísima de arcillas preciadas con la añadidura de feldespatos y caolines, realizadas mediante prensado y vueltas resistentes mecánicamente mediante un proceso de sinterización a altísimas temperaturas. Baldosas o lanchas no absorbentes, resistentes al hielo y al ataque de productos químicos. Temperatura de cocción 1230° C.

Conformidad con las normas

El material está en conformidad con los requisitos previstos en las normas internacionales UNE EN 14411 – ISO 13006 Anexo G. El mantenimiento de tales parámetros tiene que ser garantizado por el Sistema de Gestión de la Calidad activado por la empresa y certificado según la norma UNE EN ISO 9001 : 2008. Material completamente vitrificado perteneciente al Grupo Bla – E ≤ 0,5 %.









КЕРАМОГРАНИТ ОКРАШЕННЫЙ В МАССЕ

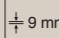
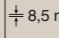


Описание товара и технологического процесса

Плитки или плиты из окрашенного в массе керамогранита, равномерно спёкшегося по всей толщине и составленного из тончайшей смеси ценных глин с добавлением полевого шпата и каолина; изготовлены методом прессования и подвергнуты процессу спекания при высоких температурах. Морозоустойчивы, водонепроницаемы, стойки к воздействию химических веществ. Температура обжига 1230° C.

Соответствие стандартам

Изделия отвечают требованиям международных стандартов UNI EN 14411 – ISO 13006, Приложение G. Поддержание высоких показателей обеспечивается системой менеджмента качества, действующей на предприятии и сертифицированной в соответствии с UNI EN ISO 9001 : 2008. Полностью спёкшийся материал, принадлежащий к группе Bla – E ≤ 0,5 %.

Caratteristiche Tecniche / Technical Characteristics Caractéristiques Techniques / Technische Anforderungen / Características técnicas / Технические характеристики EN 14411 (ISO 13006) Appendice G Gruppo Bla GL, Ev ≤ 0,5%											
Gres fine porcellanato colorato in massa / Fine full-body coloured porcelain stoneware Grès cérame coloré pleine masse / Durchgefärbtes Feinsteinzeug / Gres fino porcelánico coloreado en toda su masa / Керамогранит окрашенный в массев											
Rombo 18,7x32,4 - Rhombus 7 ³ /8x12 ³ /4 20x20 Nat - 8"x8"	 9 mm	Norma Norm Norme Norm Norma Norma	Requisiti per misura nominale N. Requirement for nominal size N. Conditions requises pour obtenir mesure nominale N. Voraussetzungen für das Nominalmaß N. Requisitos para el tamaño nominal N. Требования к номинальному размеру N.	Valore medio Average value. Valeur Moyenne Durchschnittswert Valor Mediano Среднее значение.							
			7 cm ≤ N < 15 cm	N ≥ 15 cm		CHALK					
7,5x30 Nat. - 3"x12"	 8,5 mm		(mm)	(%)	(mm)	Rombo Rhombus	20x20 8"x8"	7,5x30 3"x12"			
Caratteristiche dimensionali Non rettificati . Dimensional characteristics not rectified tiles . Caractéristiques dimensionnelles carreaux non rectifiés. Abmessungen nicht rektifiziert. Características dimensionales sin rectificar. размерные параметры плитки со спрямленными краями.		ISO 10545-2	Lunghezza e Larghezza. Lenght and width. Longuer et largeur. Länge und Breite. Longitud y anchura. Длина и ширина.	± 0,9 mm	± 0,6%	± 2,0 mm	Conforme. Suitable for. Conforme. Konform. Conforme. Соответствующий.				
			Rettilineità spigoli. Straightness. Equerrage des angles. Geradlinigkeit der Kanten. Rectilineidad de los cantos. Прямолинейность ребёр.	± 0,8 mm	± 0,5%	± 1,5 mm	Conforme. Suitable for. Conforme. Konform. Conforme. Соответствующий.				
			Ortogonalità. Squareness. Orthogonalité. Rechtwinkligkeit. Ortogonalidad. Ортогональность.	± 0,8 mm	± 0,5%	± 2,0 mm	Conforme. Suitable for. Conforme. Konform. Conforme. Соответствующий.				
			Planarità. Flatness. Planéité. Planitaet. Planaridad. Плоскостность.	± 0,8 mm	± 0,5%	± 2,0 mm	Conforme. Suitable for. Conforme. Konform. Conforme. Соответствующий.				
Caratteristiche dimensionali. Dimensional characteristics. Caractéristiques dimensionnelles. Abmessungen. Características dimensionales. размерные параметры.		ISO 10545-2	Valore dichiarato dal produttore Value declared by the manufacturer			Conforme. Suitable for. Conforme. Konform. Conforme. Соответствующий.					
			± 0,5 mm	± 5,0 %	± 0,5 mm						
Caratteristiche strutturali. Structural characteristics. Caractéristiques structurales. Strukturelle Eigenschaften. Características estructurales. Конструктивные свойства.		ISO 10545-3	Assorbimento % d'acqua. Water Absorption. Absorption d'eau. Wasseraufnahme. Absorción % de agua. Водопоглощение, %.			Ev ≤ 0,5%			Ev ≤ 0,1%		
Caratteristiche meccaniche massive. Bulk mechanical characteristics. Caractéristiques mécaniques massives. Mechanische Eigenschaften des Scherben. Características mecánicas. Механические свойства массы.		ISO 10545-4	Sforzo di rottura. Breaking strenght. Force de rupture. Bruchlast. Esfuerzo de ruptura. Усилие на излом.			(Spessore ≥ 7,5 mm) S ≥ 1300 N (Thickness ≥ 7,5 mm) S ≥ 1300 N			S ≥1800 N		
			Resistenza alla flessione. Breaking strength. Résistance a la flexion. Biegefestigkeit. Resistencia a la flexión. Прочность на изгиб.			R ≥ 35 N/mm²			R ≥ 45 N/mm²		
Caratteristiche meccaniche superficiali. Surface mechanical characteristics. Caractéristiques mécaniques superficielles. Mechanische Eigenschaften der Oberfläche. Características mecánicas superficiales. Поверхностные механические свойства.		ISO 10545-6	Resistenza all'abrasione profonda. Deep scratch resistance. Résistance à l'abrasion. Tiefenabriebharte. Resistencia a la abrasión profunda. Устойчивость к глубокому истиранию.			≤ 175 mm³			≤ 150 mm³	≤ 150 mm³	≤ 150 mm³
Caratteristiche termo-igrometriche. Thermal and hygrometric characteristics. C. thermiques et hygrométriques. Thermo-hygrometriche Eigenschaften. Características termohigrométricas. Тепловые и гигрометрические свойства.		ISO 10545-8	Coefficiente di dilatazione termica lineare. Linear heat expansion coefficient. Coefficient de dilatation thermique linéique. Lineare thermische Dehnung. Coeficiente de dilatación térmica lineal. Кэффициент линейного расширения.			Valore dichiarato (ISO 13006: metodo di prova disponibile). Declared value (ISO 13006: Test method available).			≤ 7 [mk]⁻¹		
		ISO 10545-9	Resistenza agli sbalzi termici. Thermal shock resistance. Résistance aux écarts de température. Temperaturwechselbestaendigkeit. Resistencia a los choques térmicos. Стойкость к перепаду температур.			In accordo con la EN ISO 10545-1 (ISO 13006: metodo di prova disponibile) In accordance with EN ISO 10545-1 (ISO 13006: test method available)			Resiste. Resistant. Résistant. Beständig. Resiste. Выдерживает.		
		ISO 10545-12	Resistenza al gelo. Frost resistance. Résistance au gel. Frostbestaendigkeit. Resistencia a las heladas. Морозостойкость.			In accordo con la EN ISO 10545-1 (ISO 13006: richiesta) In accordance with EN ISO 10545-1 (ISO 13006: required)			Resiste. Resistant. Résistant. Beständig. Resiste. Выдерживает.		

Caratteristiche Tecniche / Technical Characteristics								
Caractéristiques Techniques / Technische Anforderungen / Características técnicas / Технические характеристики								
EN 14411 (ISO 13006) Appendice G Gruppo Bla GL, Ev ≤ 0,5%								
Gres fine porcellanato colorato in massa / Fine full-body coloured porcelain stoneware								
Grès cérame coloré pleine masse / Durchgefärbtes Feinsteinzeug / Gres fino porcelánico coloreado en toda su masa / Керамогранит окрашенный в массе								
Rombo 18,7x32,4 - Rhombus 7 ⁹ / ₁₆ x12 ³ / ₄ 20x20 Nat - 8"x8"	 9 mm	Norma Norm Norme Norm Norma Норма	Requisiti per misura nominale N. Requirement for nominal size N. Conditions requises pour obtenir mesure nominale N. Voraussetzungen für das Nominalmaß N. Requisitos para el tamaño nominal N. Требования к номинальному размеру N.	Valore medio Average value. Valeur Moyenne Durchschnittswert Valor Mediano Среднее значение.				
7,5x30 Nat. - 3"x12"	 8,5 mm		7 cm ≤ N < 15 cm	N ≥ 15 cm	CHALK			
			(mm)	(%)	(mm)	Rombo Rhombus	20x20 8"x8"	7,5x30 3"x12"
Caratteristiche di sicurezza. Safety characteristics. Caractéristiques de sécurité. Sicherheitsmerkmale. Características de seguridad. Характеристики безопасности.		Coefficiente di attrito dinamico. Dynamic friction coefficient. Coefficient de frottement dynamique. Dynamischer Reibungskoeffizient. Coeficiente de rozamiento dinámico. Устойчивость к скольжению при движении.	B.C.R.A. μ > 0,40	D.M.I. Giugno 1989 n. 236 (μ > 0,40)	> 0,40	> 0,40	Non applicable. Not applicable. Non applicable. Nicht anwendbar. No applicable. Не применяется.	
		Coefficiente di attrito dinamico. Dynamic friction coefficient. Coefficient de frottement dynamique. Dynamischer Reibungskoeffizient. Coeficiente de rozamiento dinámico. Устойчивость к скольжению при движении.	ANSI A137.1:2012 (BOT 3000)	≥ 0,42 Bagnato ≥ 0,42 Wet	≥ 0,42 WET	≥ 0,42 WET	Non applicable. Not applicable. Non applicable. Nicht anwendbar. No applicable. Не применяется.	
		Resistenza allo scivolamento. Slip resistance. Résistance au glissement. Rutschfestigkeit. Resistencia al deslizamiento. Сопротивление скольжению.	BS7976-2:2002 Pendulum Testers	Bassa potenzialità di scivolamento. Low slip risk. ≥ 36 Asciutto / ≥ 36 Bagnato ≥ 36 Dry / ≥ 36 Wet	≥ 36 DRY	≥ 36 DRY	Non applicable. Not applicable. Non applicable. Nicht anwendbar. No applicable. Не применяется.	
		Classificazione antiscivolo. Non-slip classification. Classification antidérapement. Trittsicherheitsklassen (Barfuß). Clasificación antideslizamiento. Классификация противоскользящей плитки.	DIN 51130	In funzione dell'ambiente o della zona di lavoro Based on the environment or on the working area	R10	R10	Non applicable. Not applicable. Non applicable. Nicht anwendbar. No applicable. Не применяется.	
		Classificazione antiscivolo (Piedi nudi). Non-slip classification (Barefoot). Classification antidérapement (Pieds nus). Trittsicherheitsklassen. Clasificación antideslizamiento (Pies descalzos). Классификация противоскользящей плитки (Босые ноги).	DIN 51097	Secondo la classificazione indicata dal fabbricante Manufactured to state classification	A	A	Non applicable. Not applicable. Non applicable. Nicht anwendbar. No applicable. Не применяется.	
Caratteristiche chimiche. Chemical characteristics. Caractéristiques chimiques. Chemische Eigenschaften. Características químicas. Химические свойства.		Resistenza ai prodotti chimici di uso domestico ed agli additivi per piscina. Resistance to household chemicals and swimming pool salts. Résistance aux produits chimiques à usage domestique et aux adjuvants pour piscines. Beständigkeit gegen Haushaltschemikalien und Badewasserzusätze. Resistencia a los productos químicos de uso doméstico y a los aditivos para piscinas. Устойчивость к воздействию химических средств домашнего использования и химических добавок для бассейна.		Classe B/B min Class B/B min	A	A	A	
		Resistenza a basse concentrazioni di acidi e alcali. Resistance to low concentrations of acids and alkalis. Résistance aux acides et aux alcalis à basse concentration. Beständigkeit gegen niedrigkonzentrierte Säuren und Laugen. Resistencia a bajas concentraciones de ácidos y álcalis. Устойчивость к кислотам и щелочам низкой концентрации.	ISO 10545-13	Valore dichiarato (ISO 13006: secondo la class. indicata dal fabbricante). Declared value (ISO 13006: Manufacturer to state classification).	LA	LA	LA	
		Resistenza ad alte concentrazioni di acidi e alcali. Resistance to high concentrations of acids and alkalis. Résistance aux acides et aux alcalis à haute concentration. Beständigkeit gegen hochkonzentrierte Säuren und Laugen. Resistencia a altas concentraciones de ácidos y álcalis. Устойчивость к кислотам и щелочам высокой концентрации.		Valore dichiarato (ISO 13006: metodo di prova disponibile). Declared value (ISO 13006: Test method available).	HA	HA	HA	
		Resistenza alle macchie. Resistance to stains. Résistance aux taches. Fleckenbeständigkeit. Resistencia a las manchas. Тойкость к образованию пятен.	ISO 10545-14	Valore dichiarato (ISO 13006: metodo di prova disponibile). Declared value (ISO 13006: Test method available).			Pulibile. Cleanable. Nettoyable. Kann gereinigt werden. Limpiable. Моющийся.	

* Per piastrelle rettangolari, che abbiano il lato maggiore L ≥ 60 cm e rapporto tra i lati ≥ 3, la misurazione della ortogonalità deve venire condotta solo sul lato corto.
For oblong tiles with L ≥ 60 cm and ratio length/width L/W ≥ 3, measurement of rectangularity only on short edges.

Ceramiche Marca Corona S.p.A. si riserva il diritto di apportare in qualsiasi momento modifiche o variazioni a quanto descritto in questo documento.
Ceramiches Marca Corona S.p.A. reserves the right to modify the above specifications at any time without notice.
Ceramiches Marca Corona S.p.A. se réserve le droit d'apporter à tout moment des modifications ou des variations à la description contenue dans ce document.
Cerámicas Marca Corona S.p.A. se reserva el derecho de modificar o variar en cualquier momento el contenido de este documento.
Ceramiches Marca Corona S.p.A. оставляет за собой право вносить в любой момент изменения в содержание настоящего документа.

gres fine porcellanato colorato in massa / fine full-body coloured porcelain stoneware

Pack.	Thickness	Pcs/Box	Mq/Box	Kg/Box	Box/Pallet	Mq/Pallet	Kg/Pallet
rombo 18,7x32,4	9 mm	29	0,87853	16,40	48	42,16944	787,20
20x20	9 mm	30	1,20	23,90	56	67,20	1338
7,5x30	8,5 mm	48	1,08	20,52	48	51,84	985

stucco / grout line

Si consiglia di utilizzare uno stucco in tono con il materiale ceramico.
We advise using a grout that matches the colour of the ceramic material.

colori / colors	stucco / grout Kerakoll	stucco / grout Mapei
Clk. White	51 Silver	103 Moon White
Clk. Silver	03 Grigio Perla	110 Manhattan 2000
Clk. Grey	04 Grigio Ferro	113 Grigio Cemento
Clk. Dark	05 Antracite	114 Antracite
Clk. Colors	02 Grigio Luce / 03 Grigio Perla	111 Grigio Argento / 110 Manhattan 2000
Clk. Decors	02 Grigio Luce / 03 Grigio Perla	111 Grigio Argento / 110 Manhattan 2000




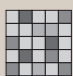
pezzi speciali / special pieces



Battiscopa 20 4,6x20 cm - 1.8"x8"

E673 Clk. White
E674 Clk. Silver
E675 Clk. Grey
E676 Clk. Dark

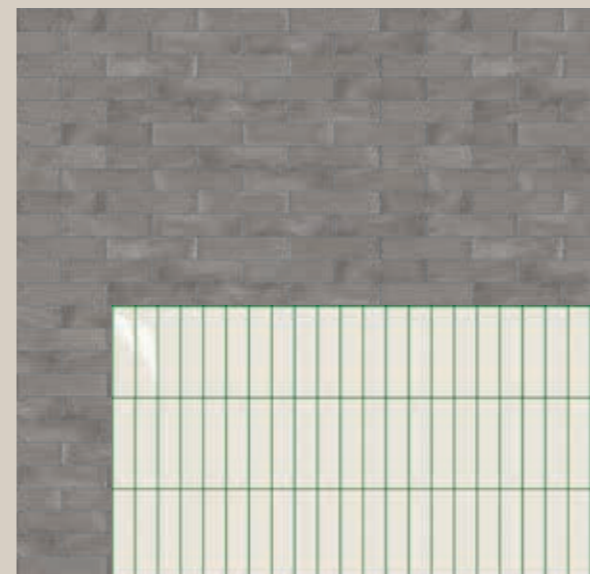
variazione cromatica / shade variation: Chalk V2

 V1	 V2	 V3	 V4
ASPETTO UNIFORME: le differenze tra piastrelle dello stesso lotto produttivo sono minime.	VARIAZIONE MINIMA: colori simili presentano diverse texture e/o motivi superficiali.	VARIAZIONE MODERATA: Mentre i colori presenti su una singola piastrella sono indicativi dei colori presenti sulle altre piastrelle, il numero dei colori presenti su ogni singolo pezzo può variare significativamente.	VARIAZIONE SOSTANZIALE: Differenze di colore casuali tra le piastrelle, ogni piastrella può avere colori completamente differenti dalle altre. L'effetto finale della posa è unico e irripetibile.
UNIFORM APPEARANCE: Differences among pieces from the same production run are minimal.	SLIGHT VARIATION: Clearly distinguishable texture and/or pattern within similar colors.	MODERATE VARIATION: While the colors present on a single piece of tile will be indicative of the colors to be expected on the other tiles, the amount of colors on each piece may vary significantly.	SUBSTANTIAL VARIATION: Random color differences from tile to tile, so that one tile may have totally different colors from that on other tiles. Thus, the final installation will be unique.

SUGGERIMENTI DI POSA
INSTALLATION TIPS



pag. 10-11



Rivestimento/Wall:
E631 Clk. Grey 7,5x30 (3"x12")

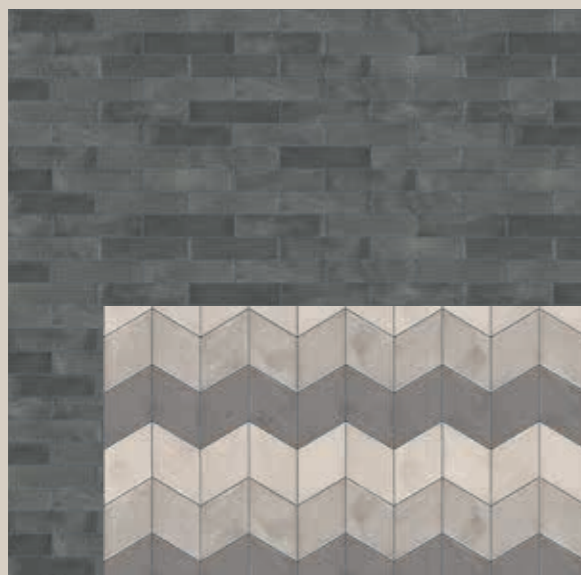
Bancone/Counter:
0142 Ton. White 7,5x30 (3"x12")



Pavimento/Floor:
E756 Clk. Grey Rmb 18,7x32,4cm (7³/₈x12³/₄) 50%
E757 Clk. Dark Rmb 18,7x32,4cm (7³/₈x12³/₄) 50%

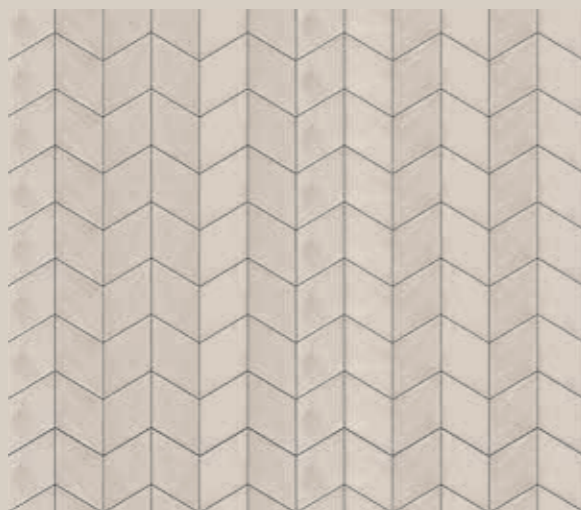


pag. 17



Rivestimento/Wall:
E632 Clk. Dark 7,5x30 cm (3"x12")

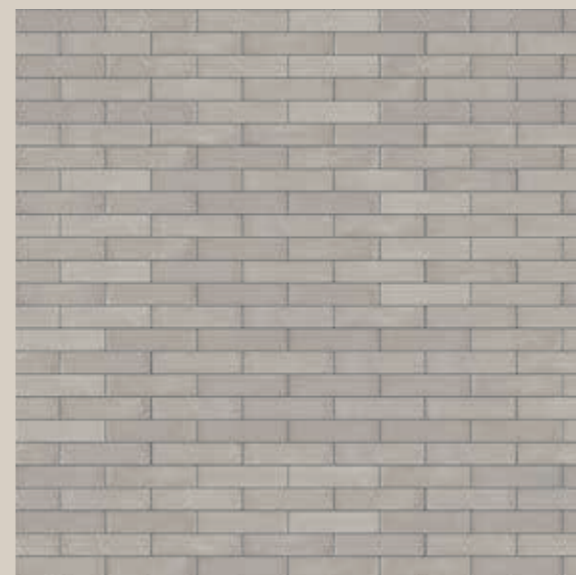
Bancone/Counter:
E754 Clk. White Rmb 18,7x32,4cm (7³/₈x12³/₄) 33,3%
E755 Clk. Silver Rmb 18,7x32,4cm (7³/₈x12³/₄) 33,3%
E756 Clk. Grey Rmb 18,7x32,4cm (7³/₈x12³/₄) 33,3%



Pavimento/floor:
E754 Clk. White Rmb 18,7x32,4cm (7³/₈x12³/₄)



pag. 22-23



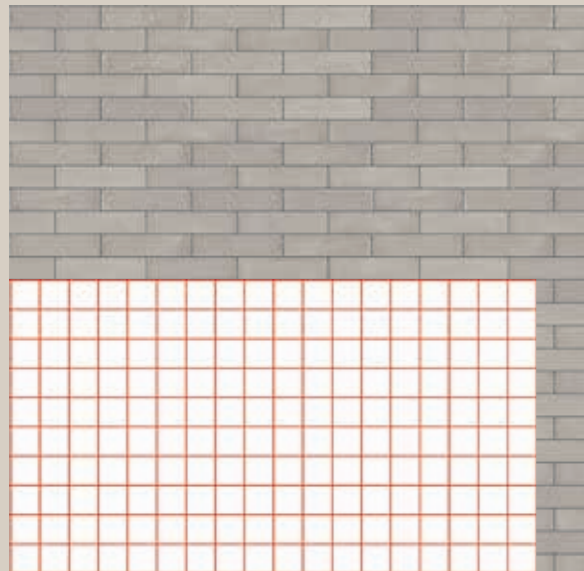
Rivestimento/wall:
E630 Clk. Silver 7,5x30 (3"x12")



Pavimento/floor:
E755 Clk. Silver Rmb 18,7x32,4cm (7³/₈x12³/₄) 10%
E756 Clk. Grey Rmb 18,7x32,4cm (7³/₈x12³/₄) 45%
E757 Clk. Dark Rmb 18,7x32,4cm (7³/₈x12³/₄) 45%



pag. 28-29



Rivestimento/wall:
E630 C1k. Silver 7,5x30 (3"x12")

Bancone/counter:
E620 Mai.Bianco 10x10 (4"x4")



Pavimento/floor:
E754 C1k. White Rmb 18,7x32,4cm (7³/₈x12³/₄) 33,3%
E756 C1k. Grey Rmb 18,7x32,4cm (7³/₈x12³/₄) 33,3%
E757 C1k. Dark Rmb 18,7x32,4cm (7³/₈x12³/₄) 33,3%



pag. 35




Rivestimento/wall:
E637 C1k. Decors 20x20 (8"x8")
E634 C1k. Silver 20x20 (8"x8")



Pavimento/floor:
E637 C1k. Decors 20x20 (8"x8")
E634 C1k. Silver 20x20 (8"x8")



 **made in italy**
SINCE 1741



© Copyright 2018
Ceramiche Marca Corona Spa


Second Edition
Printed in February 2018


 facebook.com/MarcaCorona1741


 twitter.com/MarcaCorona


 pinterest.com/marcacorona

 instagram.com/marcacorona1741/

 youtube.com/user/MarcaCorona1741

 vimeo.com/marcacorona1741

 linkedin.com/company/ceramiche-marca-corona-s-p-a

 it.wikipedia.org/wiki/Marca_Corona

